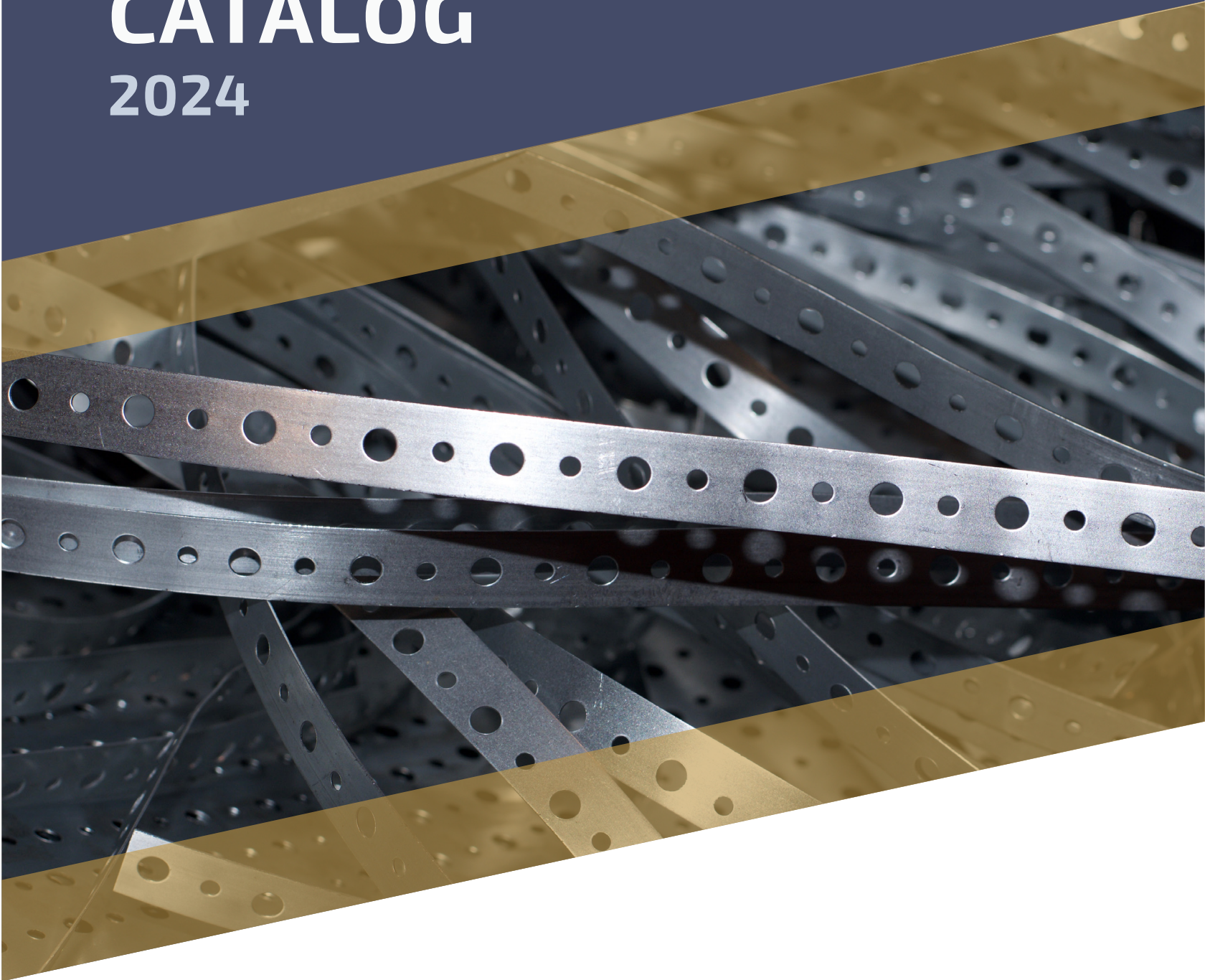


PRODUCT CATALOG 2024





Dundee Manufacturing Company
107 Fairchild Drive
Dundee, Michigan 48131

W: www.dundeemfg.com
E: csr@dundeemfg.com
P: 734.529.2540
F: 734.529.3583

For customer inquiries please contact Customer Service/Inside Sales
orders@dundeemfg.com

Copyright November 2024
Dundee, MI
Dundee Manufacturing Company
2024 DMC Product Catalog

In house publishing created by Heather Cannon for Dundee Manufacturing Company.
POSTMASTER: Send address changes to Dundee Manufacturing Company, PO Box 143, Dundee, MI 48131

WELCOME

Peter Davis President

Welcome! Dundee Manufacturing Company is an emerging metal stamping manufacturer in the Plumbing and Solar industries. We look forward to working with you to help get the most out of our products and allowing us to help you reach your goals.

Here at Dundee, we pride ourselves on being a "CANDO COMPANY" committed to our vision of providing exceptional customer satisfaction. This means we work very diligently to provide competitive pricing, on time delivery and exceptional customer satisfaction. We have been servicing the Plumbing industry for over 20 years and the solar industry for over 12 years. We hope that we'll exceed your expectations.

Our excellent customer service team is available from 8am to 5 pm Monday through Friday to help with any questions you may have. You can contact them by email at csr@dundeemfg.com or by phone at (734)-529-2540.

Peter Davis
President

PAGE OF CONTACT

04	CONTRACT CUSTOM MFG
06	MISSION & VALUES
09	PLUMBERS TAPE
12	BOCA PLATES
14	STUD GUARDS

18	NAIL PLATES
24	PIPE STRAPS
28	PIPE HOOKS
30	PLASTIC CLAMPS
32	HVAC
34	TERMS



Dundee Manufacturing Company
Products are made in the USA

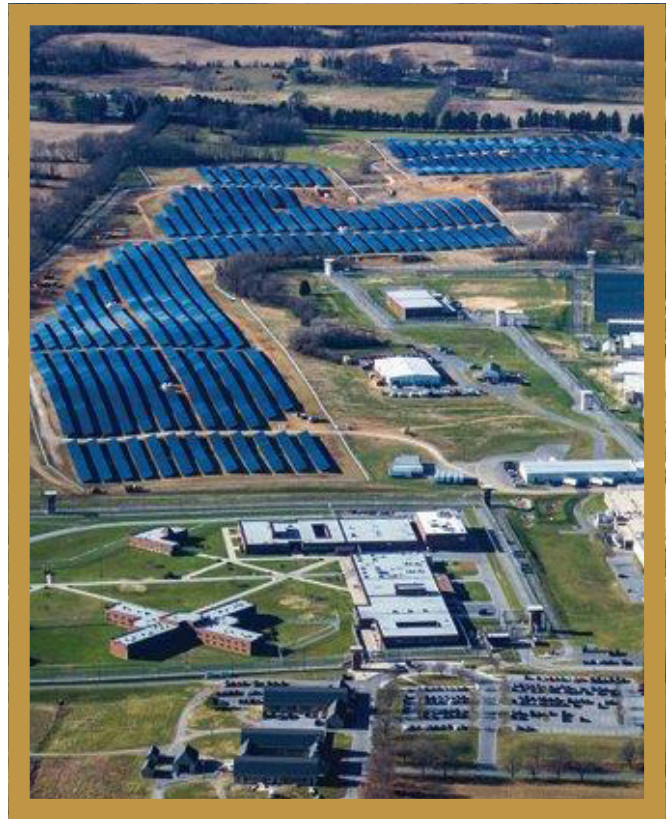
All images are owned and produced by Dundee Manufacturing Company and are not to be duplicated. All prices are subject to change without notice. DMC is not responsible for any typographical errors or omissions.

ENGINEERED Products & Contract Custom Manufacturing

In 2012, Dundee started selling parts to a new solar rack manufacturer. Working together with their engineering team we were able to assist in establishing their product offering and help them grow into a multi-million-dollar company. Over the past 9 years we have gained the knowledge and experience to become a contract manufacturer to the solar industry. We continue to expand our capabilities to keep up with the demands and changing requirements to manufacture engineered products.

The Dundee philosophy is to build long lasting relationships with our customers to understand exactly what they need throughout this process. We strive to help our customers develop products and processes to provide “can do” solutions.

When choosing Dundee Manufacturing you will receive first hand knowledge and experience to generate cost savings through engineered services, enhanced product development and time to market.



We aim to provide cost savings by reviewing the current print or part and submitting a potential redesign, new process or part configuration without changing the part’s integrity.

We are equipped to accommodate a concept to finished part using our in-house capabilities that allow us to have complete control over the design and product build process.

EQUIPMENT & Capabilities

Here at DMC, we have the ability to manufacture from low to high volume stamping, and offer some assembly to add value for our customers. With over 60 years of experience we have a strong supplier base and the ability to provide custom products to multiple industries.

In House Capabilities & Services

We have engineering support from part concept to finished product.

Product Design

Product Development & R&D Engineered Services

Prototype & Testing (Rapid or Low Volume)

Die Design Capabilities (*Solid-works, Auto CAD, Logo Press*)

Die Build & Assembly

Wire EDM

CNC Machining

3D Printing

Precision Stamping (Servo & Mechanical Presses up to 300 ton)

Tube Piercing

Stamping: Line or Progressive Dies to accommodate low, medium & high volume production runs

Value Added Services

Special Packaging & Private Label

Poly-bagging

UPC Barcoding

In-house Label Design

Laser Cutting and CNC Press Brake

Powder Coating

E-Coating

After Fab Hot Dipped Galvanized

Pre Fab Hot Dipped Galvanized

Copper Plating (pre plate or post plate)

Zinc Plating

Heat Treating

VALUES WE LIVE BY

Can-Do Company Values

- 01 WE MUST EMBRACE THE VALUE OF TEAMWORK**

Anytime I am putting my team's interest in front of my own, or helping my teammates, or doing whatever it takes for my team to be successful.
- 02 WE MUST BUILD AND MAINTAIN TRUST WITH OUR RELATIONSHIP(S)**

Anytime we are having open communication with teammates, customers, suppliers to resolve conflict or disagreements, or providing respectful feedback with honesty, integrity, and treating everyone with respect.
- 03 WE MUST BE ACCOUNTABLE FOR OUR RESPONSIBILITIES**

Anytime I am taking full responsibility for my team, myself, job responsibilities or owning what happens in my life or job 100% of the time good or bad.
- 04 WE MUST HAVE PRIDE AND STRIVE FOR EXCELLENCE IN OUR WORKMANSHIP**

Anytime I am not taking shortcuts, or doing the bare minimum in my work, or providing workmanship that exceeds customer satisfaction, and is above our established quality requirements.
- 05 WE MUST ENHANCE OUR PERSONAL AND PROFESSIONAL GROWTH**

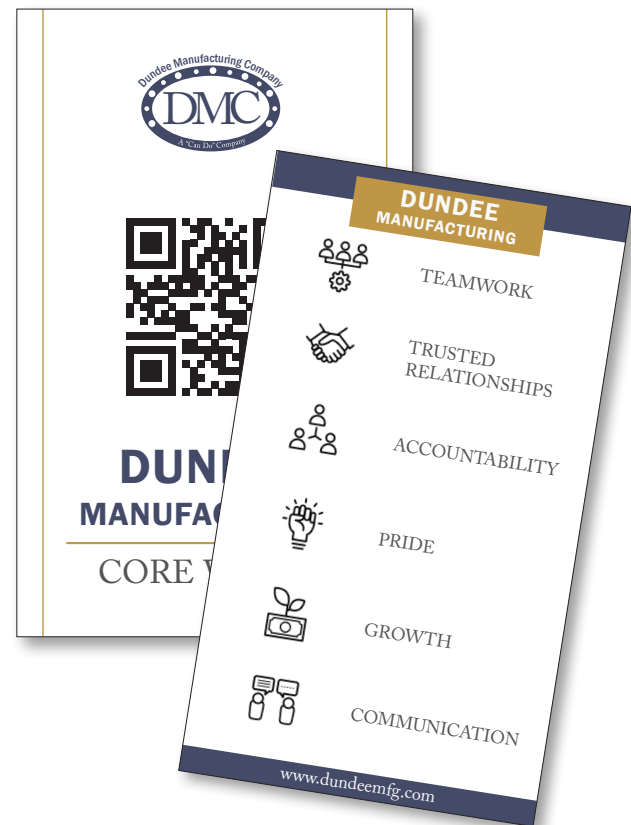
Anytime I am working towards expanding my knowledge, experience and skills to help self improve both personally and professionally.
- 06 WE MUST HAVE OPEN, HONEST & RESPECTFUL COMMUNICATIONS**

Anytime I am communicating, I will value the relationship and have consideration for whom I am speaking.

OUR MISSION

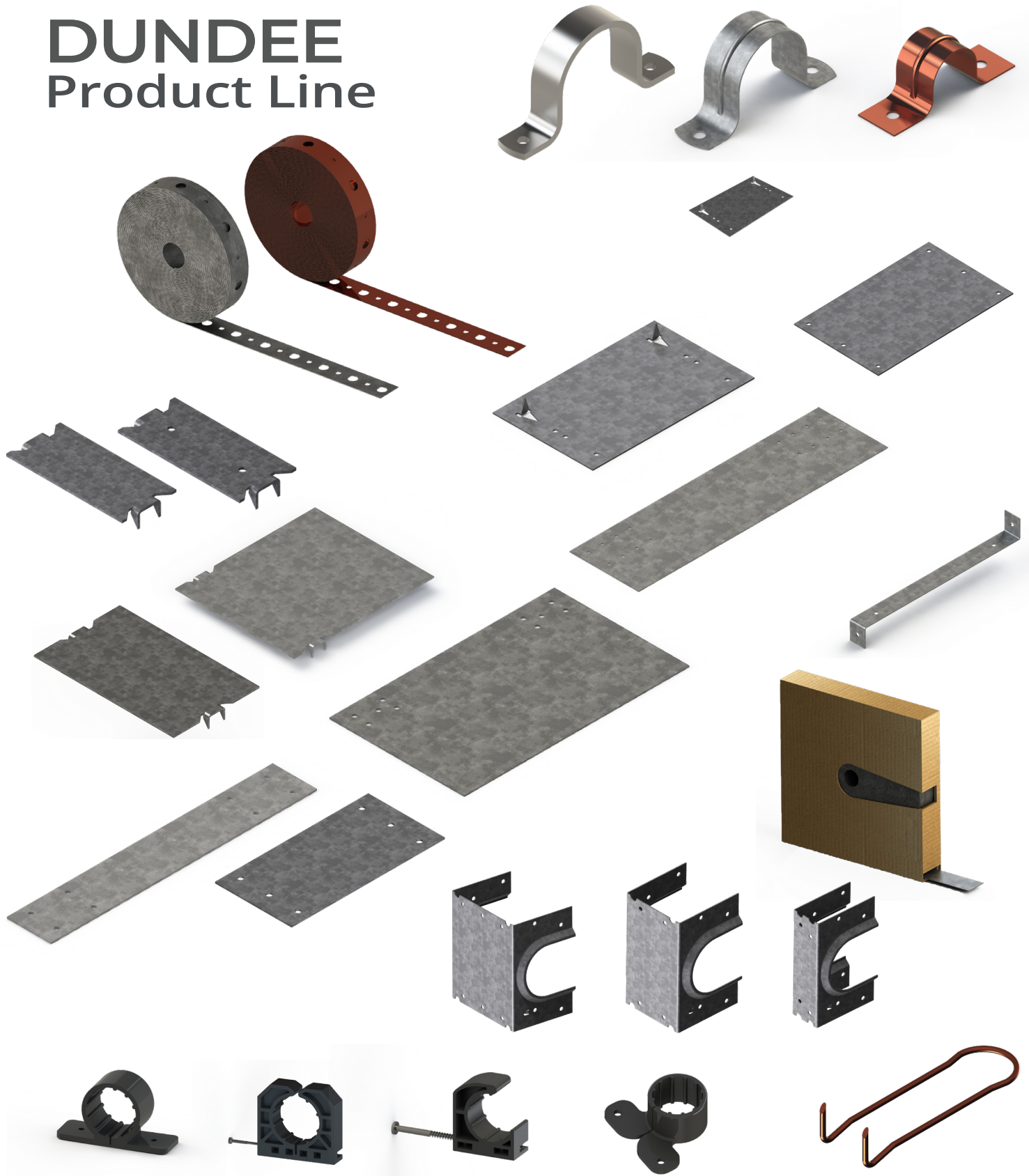
Dundee Manufacturing Company builds on tradition through continual growth and innovation to produce engineered products, with an emphasis on the plumbing and solar markets.

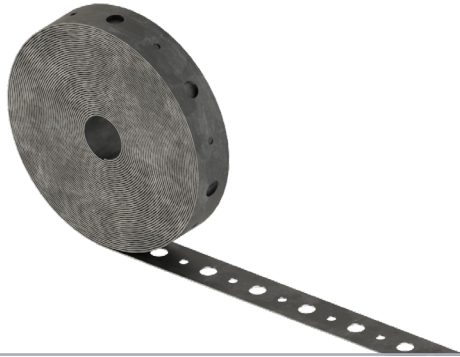
Dundee Manufacturing's success is defined by the ideal employee and the positive relationships built with customers and suppliers. Focusing on exceeding customer expectations with on-time shipments, quality product, competitive pricing, and product availability.



“Creating a dynamic culture to achieve and maintain exceptional customer satisfaction.”

DUNDEE Product Line



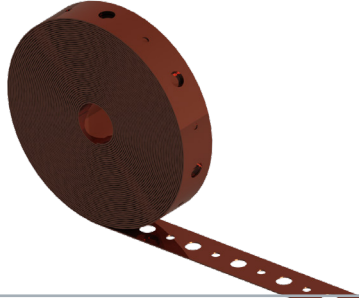


PLUMBERS TAPE

Galvanized Steel

Perforations on the strip serve as nail or screw holes for mounting. Packages per skid can be modified based on order quantity.

DMC Part No	Dimensions	GA	QTY per CTN	CTN Weight
IBI-28	3/4" x 10' Galvanized Steel Individually Poly-bagged Coils	28	24	13 lbs
28P10	3/4" x 10' Galvanized Steel Bulk Packed Coils	28	50	27 lbs
28P10-10	3/4" x 10' Galvanized Steel Bulk Packed Coils	28	10	5 lbs
28P25	3/4" x 25' Galvanized Steel Individually Boxed Coils	28	10	14 lbs
28P50	3/4" x 50' Galvanized Steel Individually Boxed Coils	28	10	27 lbs
28P100	3/4" x 100' Galvanized Steel Individually Boxed Coils	28	10	50 lbs
IBI-24	3/4" x 10' Galvanized Steel Individually Poly-bagged Coils	24	24	17 lbs
24P10	3/4" x 10' Galvanized Steel Bulk Packed Coils	24	50	35 lbs
24P10-10	3/4" x 10' Galvanized Steel Bulk Packed Coils	24	10	6 lbs
24P25	3/4" x 25' Galvanized Steel Individually Boxed Coils	24	10	18 lbs
24P50	3/4" x 50' Galvanized Steel Individually Boxed Coils	24	10	35 lbs
24P100	3/4" x 100' Galvanized Steel Individually Boxed Coils	24	6	42 lbs
IBI-22	3/4" x 10' Galvanized Steel Individually Poly-bagged Coils	22	24	25 lbs
22P10	3/4" x 10' Galvanized Steel Bulk Packed Coils	22	50	44 lbs
22P10-10	3/4" x 10' Galvanized Steel Bulk Packed Coils	22	10	9 lbs
22P25	3/4" x 25' Galvanized Steel Individually Boxed Coils	22	10	22 lbs
22P50	3/4" x 50' Galvanized Steel Individually Boxed Coils	22	10	44 lbs
22P100	3/4" x 100' Galvanized Steel Individually Boxed Coils	22	5	44 lbs
IBI-20	3/4" x 10' Galvanized Steel Individually Poly-bagged Coils	20	24	25 lbs
20P10	3/4" x 10' Galvanized Steel Bulk Packed Coils	20	50	51 lbs
20P10-10	3/4" x 10' Galvanized Steel Bulk Packed Coils	20	10	8 lbs
20P25	3/4" x 25' Galvanized Steel Individually Boxed Coils	20	10	26 lbs
20P50	3/4" x 50' Galvanized Steel Individually Boxed Coils	20	10	51 lbs
20P100	3/4" x 100' Galvanized Steel Individually Boxed Coils	20	5	51 lbs



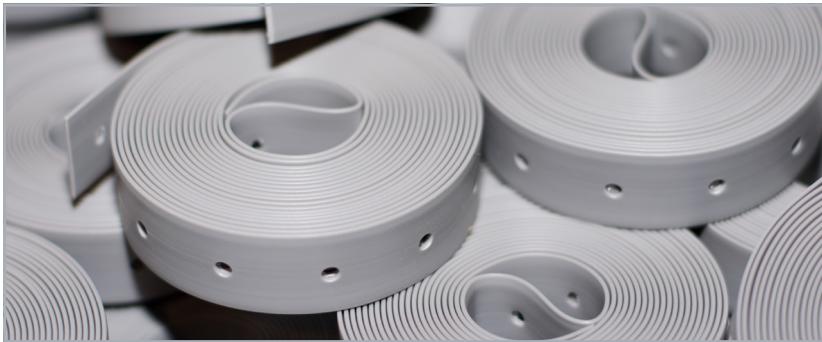
PLUMBERS TAPE

Copper Coated

Versatile product used for hanging or securing Copper Piping from walls, floor & framing members.

Eliminates Electrolysis with mixed materials.

DMC Part No	Dimensions	GA	QTY per CTN	CTN Weight
ICI-24	3/4" x 10' Copper Coated Individually Poly-bagged Coils	24	24	16 lbs
24CC10	3/4" x 10' Copper Coated Bulk Packed Coils	24	50	34 lbs
24CC25	3/4" x 25' Copper Coated Individually Boxed Coils	24	10	17 lbs
24CC50	3/4" x 50' Copper Coated Individually Boxed Coils	24	10	34 lbs
24CC100	3/4" x 100' Copper Coated Individually Boxed Coils	24	10	41 lbs

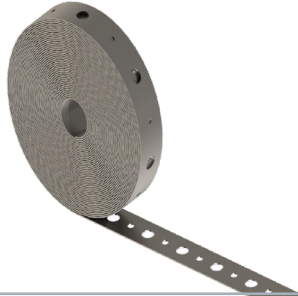


PLUMBERS TAPE

Plastic Hanger Strap

Used to reinforce ductwork, tubing and piping. Solid with or without holes. No sharp edges.

DMC Part No	Dimensions	QTY per CTN	CTN Weight
PLX-10	3/4" x 10' Plastic Individually Poly-bagged Coils - Polypropylene	100	16 lbs
PLX-25	3/4" x 25' Plastic Individually Poly-bagged Coils - Polypropylene	40	15 lbs
PLX-50	3/4" x 50' Plastic Individually Poly-bagged Coils - Polypropylene	20	15 lbs
PLX-100	3/4" x 100' Plastic Individually Poly-bagged Coils - Polypropylene	20	29 lbs



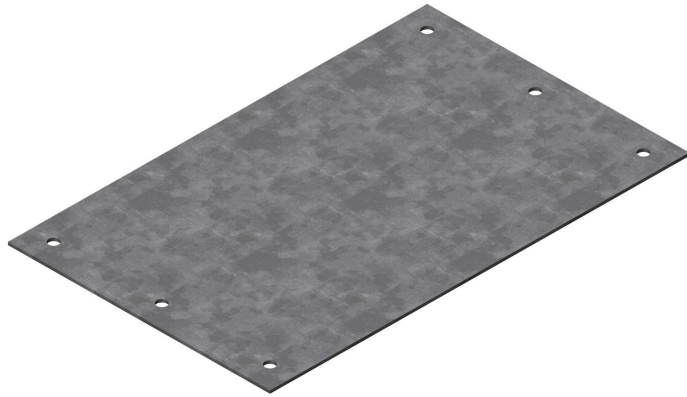
PLUMBERS TAPE

Plain Steel & Stainless Steel

Versatile product used for hanging or securing any type of ductwork, tubing or piping. Also available in 316 Stainless material.

DMC Part No	Dimensions	GA	QTY per CTN	CTN Weight
20S10	3/4" x 10' Plain Steel Bulk Packed Coils	20	50	51 lbs
20S25	3/4" x 25' Plain Steel Individually Boxed Coils	20	10	26 lbs
20S50	3/4" x 50' Plain Steel Individually Boxed Coils	20	10	51 lbs
20S100	3/4" x 100' Plain Steel Individually Boxed Coils	20	5	51 lbs

DMC Part No	Dimensions	GA	QTY per CTN	CTN Weight
24SS10-304	3/4" x 10' Stainless Steel Bulk Packed Coils	24	50	34 lbs
24SS25-304	3/4" x 25' Stainless Steel Individually Boxed Coils	24	10	17 lbs
24SS50-304	3/4" x 50' Stainless Steel Individually Boxed Coils	24	10	34 lbs
24SS100-304	3/4" x 100' Stainless Steel Individually Boxed Coils	24	6	41 lbs
22SS10-304	3/4" x 10' Stainless Steel Bulk Packed Coils	22	50	40 lbs
22SS25-304	3/4" x 25' Stainless Steel Individually Boxed Coils	22	10	20 lbs
22SS50-304	3/4" x 50' Stainless Steel Individually Boxed Coils	22	10	40 lbs
22SS100-304	3/4" x 100' Stainless Steel Individually Boxed Coils	22	5	41 lbs
20SS10-304	3/4" x 10' Stainless Steel Bulk Packed Coils	20	50	47 lbs
20SS25-304	3/4" x 25' Stainless Steel Individually Boxed Coils	20	10	23 lbs
20SS50-304	3/4" x 50' Stainless Steel Individually Boxed Coils	20	10	47 lbs
20SS100-304	3/4" x 100' Stainless Steel Individually Boxed Coils	20	5	56 lbs



BOCA PLATES

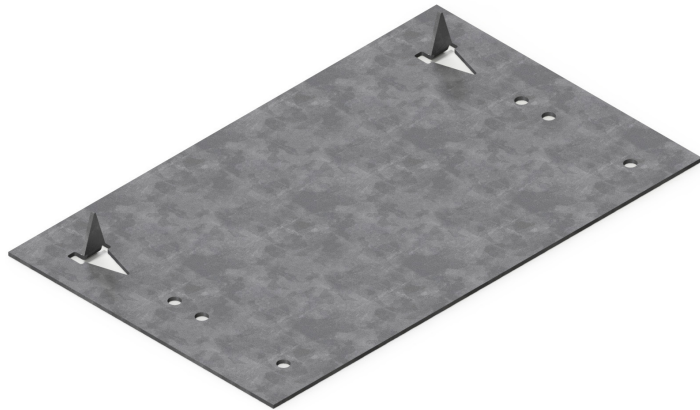
MP-5816

BOCA Plates are used to meet the protective requirements of the building code. Protective plates are used on the top and bottom of the wall to avoid penetration of fasteners into wiring or piping.

Description

Used for cold formed steel stud construction using proper fasteners

DMC Part No	Description	GA	QTY per CTN	CTN Weight	Skid QTY
MP-5616	5" x 6" - Multi Hole - Galvanized	16	50	26 lbs	175 CTNS
MP-5816	5" x 8" - 6 Hole - Galvanized	16	25	18 lbs	175 CTNS



BOCA PLATES

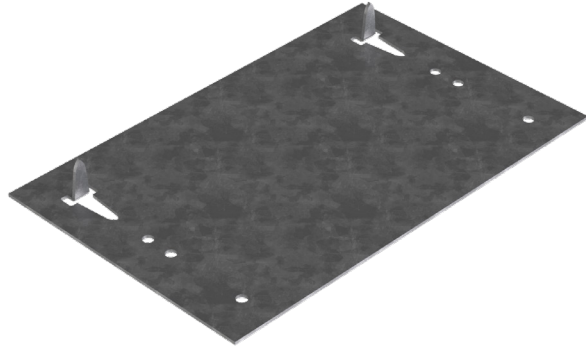
MPT-5816

BOCA Plates are used to meet the protective requirements of the building code. Protective plates are used on the top and bottom of the wall to avoid penetration of fasteners into wiring or piping.

Description

Triangle prong allow for easy install

DMC Part No	Description	GA	QTY per CTN	CTN Weight	Skid QTY
MPT-5816	5" x 8" - 6 HOLE - Self Nailing (Triangle) Galvanized	16	25	19 lbs	160 CTNS



BOCA PLATES

MPS-5816

BOCA Plates are used to meet the protective requirements of the building code. Protective plates are used on the top and bottom of the wall to avoid penetration of fasteners into wiring or piping.

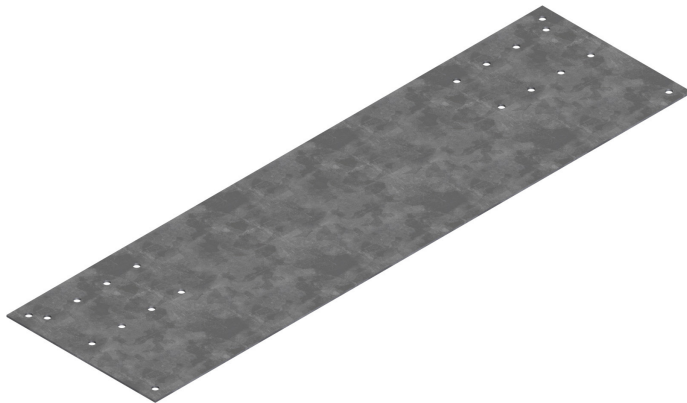
Description

Self Nailing feature promises fast and hands-free installation

DMC Part No	Description	GA	QTY per CTN	CTN Weight	Skid QTY
MPS-5816	5" x 8" - 6 HOLE - Self Nailing -Galvanized	16	25	19 lbs	160 CTNS

Manufacturer Recommendation

Use #10 self-tapping screws



BOCA PLATES

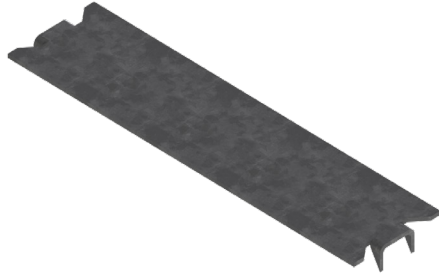
MP-51816

BOCA Plates are used to meet the protective requirements of the building code. Protective plates are used on the top and bottom of the wall to avoid penetration of fasteners into wiring or piping.

Description

Available in 16" and 18" to reinforce top plate for covering entire stud bay

DMC Part No	Description	GA	QTY per CTN	CTN Weight	Skid QTY
MP-51616	5" x 16" - 8 Holes EA End - Galvanized	16	15	21 lbs	112 CNTS
MP-51816	5" x 18" - Holes EA End - Galvanized	16	15	23 lbs	112 CTNS



STUD GUARDS

1-1/2" Galvanized

Used to provide protection from fasteners penetrating into pipe and wiring. Offered in end prong and interlocking.

DMC Part No	Dimensions	GA	QTY per CTN	CTN Weight	Skid QTY
SGE-322	1-1/2" x 3" Galvanized Stud Guard	22	100	4 lbs	200 CTNS
SGE-522	1-1/2" x 5" Galvanized Stud Guard	22	100	8 lbs	128 CTNS
SGE-622	1-1/2" x 6" Galvanized Stud Guard	22	100	9 lbs	128 CTNS
SGE-320	1-1/2" x 3" Galvanized Stud Guard	20	100	8 lbs	200 CTNS
SGE-520	1-1/2" x 5" Galvanized Stud Guard	20	100	9 lbs	128 CTNS
SGE-620	1-1/2" x 6" Galvanized Stud Guard	20	100	9 lbs	128 CTNS
SGE-920	1-1/2" x 9" Galvanized Stud Guard	20	100	8 lbs	128 CTNS
SGE-1220	1-1/2" x 12" Galvanized Stud Guard	20	100	9 lbs	80 CTNS
SGE-1820	1-1/2" x 18" Galvanized Stud Guard	20	50	14 lbs	128 CTNS
SGE-2420	1-1/2" x 24" Galvanized Stud Guard	20	25	13 lbs	128 CTNS
SGE-318	1-1/2" x 3" Galvanized Stud Guard	18	100	6 lbs	200 CTNS
SGE-518	1-1/2" x 5" Galvanized Stud Guard	18	100	11 lbs	128 CTNS
SGE-618	1-1/2" x 6" Galvanized Stud Guard	18	100	13 lbs	128 CTNS
SGE-918	1-1/2" x 9" Galvanized Stud Guard	18	100	19 lbs	128 CTNS
SGE-1218	1-1/2" x 12" Galvanized Stud Guard	18	100	25 lbs	80 CTNS
SGE-1818	1-1/2" x 18" Galvanized Stud Guard	18	50	19 lbs	128 CTNS
SGE-2418	1-1/2" x 24" Galvanized Stud Guard	18	25	13 lbs	128 CTNS
SGE-316	1-1/2" x 3" Galvanized Stud Guard	16	100	7 lbs	200 CTNS
SGE-516	1-1/2" x 5" Galvanized Stud Guard	16	100	14 lbs	128 CTNS
SGE-616	1-1/2" x 6" Galvanized Stud Guard	16	100	16 lbs	128 CTNS
SGE-816	1-1/2" x 8" Galvanized Stud Guard	16	50	11 lbs	128 CTNS
SGE-916	1-1/2" x 9" Galvanized Stud Guard	16	100	25 lbs	128 CTNS
SGE-1216	1-1/2" x 12" Galvanized Stud Guard	16	100	34 lbs	80 CTNS
SGE-1816	1-1/2" x 18" Galvanized Stud Guard	16	50	25 lbs	128 CTNS
SGE-2416	1-1/2" x 24" Galvanized Stud Guard	16	25	17 lbs	128 CTNS

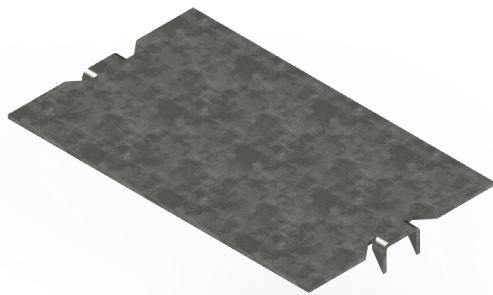


STUD GUARDS

Extra Small with 2 Holes

Used to provide protection for pipes and wiring from nails or screws.

DMC Part No	Dimensions	GA	QTY per CTN	CTN Weight
SGE-1.516	1-1/2" x 1-1/2" Galvanized	16	200	8 lbs
SGE-1.5162H	1-1/2" x 1-1/2" Galvanized with 2 Holes	16	200	8 lbs
SGE-2.75162H	1-1/2" x 2-3/4" Galvanized with 2 Holes	16	200	15 lbs
SGE-3162H	1-1/2" x 3" Galvanized with 2 Holes	16	100	7 lbs



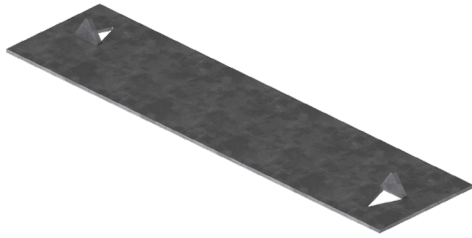
STUD GUARDS

2" & 3" Galvanized Stud Guard

Used to provide protection for pipes and wiring from nails or screws.

DMC Part No	Dimensions	GA	QTY per CTN	CTN Weight
SGE2-2516	2" x 5" Galvanized Stud Guard	16	100	17 lbs
SGE2-2616	2" x 6" Galvanized Stud Guard	16	100	20 lbs
SGE3-3316	3" x 3" Galvanized Stud Guard	16	100	16 lbs
SGE3-3516	3" x 5" Galvanized Stud Guard	16	100	24 lbs
SGE3-3616	3" x 6" Galvanized Stud Guard	16	100	32 lbs
SGE3-3916	3" x 9" Galvanized Stud Guard	16	25	12 lbs
SGE3-31216	3" x 12" Galvanized Stud Guard	16	25	16 lbs
SGE3-32416	3" x 24" Galvanized Stud Guard	16	25	31 lbs

**Note: 2" and 3" are non-stock items and may require a 2 week lead-time.*

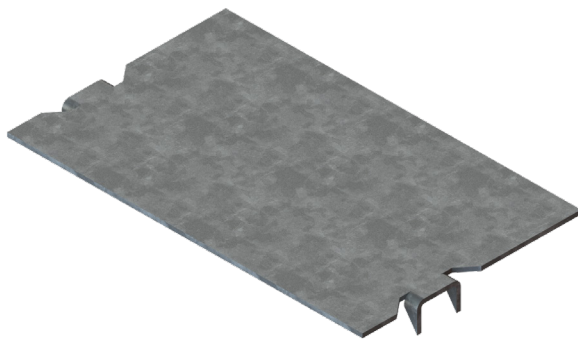


STUD GUARDS

Galvanized - Interlocking

Used to provide protection for pipes and wiring from nails or screws.

DMC Part No	Dimensions	GA	QTY per CTN	CTN Weight
SGI-620	1-1/2" x 6" Interlocking	20	100	31 lbs
SGI-618	1-1/2" x 6" Interlocking	18	100	24 lbs
SGI-616	1-1/2" x 6" Interlocking	16	100	20 lbs
SGOI-6516	6" x 5" Interlocking Offset Prongs	16	50	26 lbs

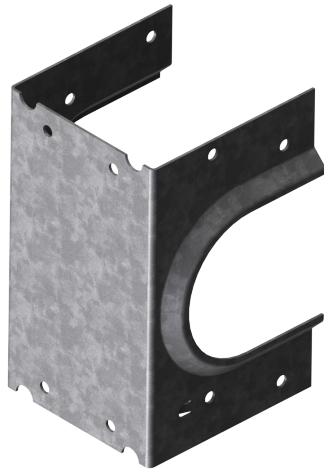


STUD GUARDS

Off Set End Prongs

Used to provide protection from fasteners penetrating into pipe and wiring.

DMC Part No	Description	GA	QTY per CTN	CTN Weight
SGO-3516	3" x 5" - Off Set Stud Galvanized	16	50	24 lbs
SGO-31816	3" x 18" - Off Set Stud Galvanized	16	25	23 lbs
SGO-3.5516	3-1/2" x 5" - Off Set Stud Galvanized	16	50	15 lbs
SGO-3.5616	3-1/2" x 6" - Off Set Stud Galvanized	16	25	9 lbs
SGO-5616	5" x 6" - Off Set Stud Galvanized	16	50	26 lbs
SGO-5816	5" x 8" - Off Set Stud Galvanized	16	25	17 lbs
SGO-51816	5" x 18" - Off Set Stud Galvanized	16	15	37 lbs
SGO-6616	6" x 6" - Off Set Stud Galvanized	16	25	16 lbs
SGO-6816	6" x 8" - Off Set Stud Galvanized	16	25	21 lbs
SGO-61216	6" x 12" - Off Set Stud Galvanized	16	25	31 lbs
SGO-61816	6" x 18" - Off Set Stud Galvanized	16	15	28 lbs

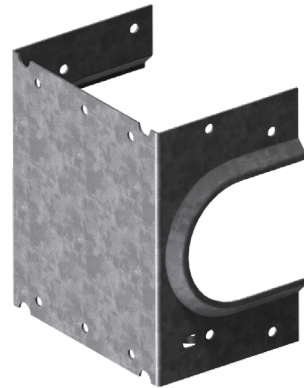
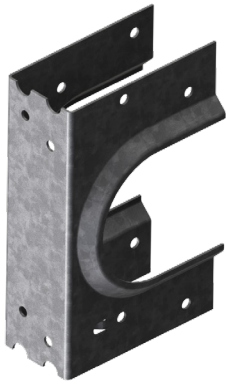


STUD SHOES

Galvanized

Used to protect piping from fastener penetration. Once stud has been notched out, suitable for single, double or triple stud applications.

DMC Part No	Description	GA	QTY per CTN	CTN Weight	Skid QTY
SS-18	Single Stud Shoe	18	25	16 lbs	80 CTNS
DS-18	Double Stud Shoe	18	25	19 lbs	80 CTNS
TS-18	Triple Stud Shoe	18	10	9 lbs	80 CTNS
SS-16	Single Stud Shoe	16	25	18 lbs	80 CTNS
DS-16	Double Stud Shoe	16	25	22 lbs	80 CTNS
TS-16	Triple Stud Shoe	16	10	10 lbs	84 CTNS



How to Order

When ordering be sure to specify which hole pattern you want. Indicate the Part Number followed by the Hole Pattern.

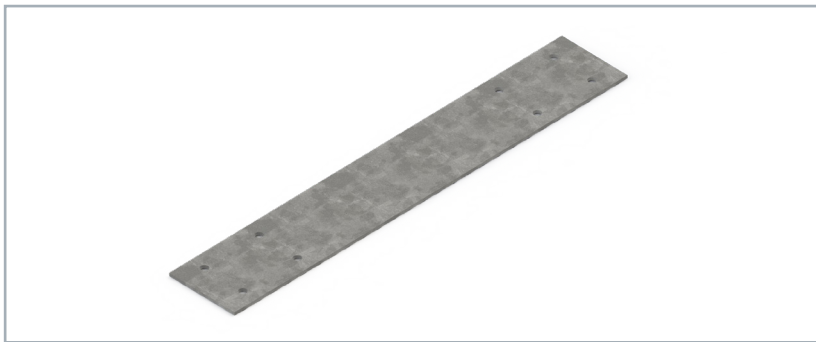
**See Hole Patterns Placements on page 22*

Sample

PLS-31816-604

↗
Part Number

↖
Hole Pattern



FHA NAIL PLATES

1-1/2" Galvanized FHA Plate

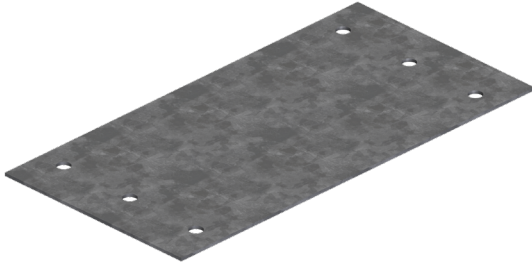
Used to reinforce floor or ceiling joists that have been cut for pipes passing through a stud

Available in 14 & 12 GA upon request.

DMC Part No	Dimensions	GA	QTY per CTN	CTN Weight	Skid QTY
PLS-620	1-1/2" x 6"	20	100	11 lbs	150 CTNS
PLS-920	1-1/2" x 9"	20	50	8 lbs	100 CTNS
PLS-318	1-1/2" x 3"	18	100	7 lbs	100 CTNS
PLS-618	1-1/2" x 6"	18	100	13 lbs	150 CTNS
PLS-918	1-1/2" x 9"	18	50	10 lbs	100 CTNS
PLS-1218	1-1/2" x 12"	18	50	13 lbs	100 CTNS
PLS-1618	1-1/2" x 16"	18	50	17 lbs	80 CTNS
PLS-1818	1-1/2" x 18"	18	50	19 lbs	80 CTNS
PLS-2418	1-1/2" x 24"	18	50	26 lbs	80 CTNS
PLS-316	1-1/2" x 3"	16	100	13 lbs	100 CTNS
PLS-616	1-1/2" x 6"	16	50	10 lbs	150 CTNS
PLS-916	1-1/2" x 9"	16	50	13 lbs	100 CTNS
PLS-1216	1-1/2" x 12"	16	50	17 lbs	100 CTNS
PLS-1616	1-1/2" x 16"	16	50	19 lbs	80 CTNS
PLS-1816	1-1/2" x 18"	16	50	10 lbs	80 CTNS
PLS-2416	1-1/2" x 24"	16	50	13 lbs	80 CTNS

**Note: 14 and 12 Gauge Plate Straps are non-stock items and may require a 2 week lead-time.*

Contact Customer Service to determine non-stock sizes and hole patterns



FHA NAIL PLATES

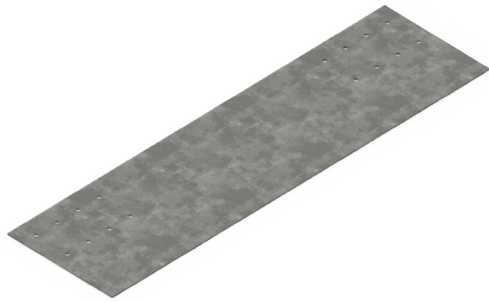
3" & 3-1/2" Galvanized FHA Plate

Used to reinforce floor or ceiling joists that have been cut for pipes passing through a stud

3" are available in 12 GA upon request.

DMC Part No	Dimensions	GA	QTY per CTN	CTN Weight	Skid QTY
PLS-3618	3" x 6"	18	50	13 lbs	200 CTNS
PLS-3918	3" x 9"	18	50	20 lbs	120 CTNS
PLS-31218	3" x 12"	18	25	13 lbs	80 CTNS
PLS-31618	3" x 16"	18	25	17 lbs	90 CTNS
PLS-31818	3" x 18"	18	25	20 lbs	90 CTNS
PLS-32418	3" x 24"	18	25	26 lbs	90 CTNS
PLS-3616	3" x 6"	16	50	16 lbs	140 CTNS
PLS-3916	3" x 9"	16	50	23 lbs	120 CTNS
PLS-31216	3" x 12"	16	25	15 lbs	90 CTNS
PLS-31816	3" x 18"	16	25	21 lbs	90 CTNS
PLS-32416	3" x 24"	16	25	31 lbs	90 CTNS
PLS-3.5618	3-1/2" x 6"	18	25	8 lbs	160 CTNS
PLS-3.5918	3-1/2" x 9"	18	25	14 lbs	N/A
PLS-3.51218	3-1/2" x 12"	18	25	18 lbs	80 CTNS
PLS-3.51818	3-1/2" x 18"	18	25	23 lbs	80 CTNS
PLS-3.52418	3-1/2" x 24"	18	25	36 lbs	N/A
PLS-3.5616	3-1/2" x 6"	16	25	9 lbs	160 CTNS
PLS-3.5916	3-1/2" x 9"	16	25	14 lbs	N/A
PLS-3.51216	3-1/2" x 12"	16	25	18 lbs	80 CTNS
PLS-3.51816	3-1/2" x 18"	16	25	26 lbs	80 CTNS
PLS-3.52416	3-1/2" x 24"	16	25	36 lbs	N/A

*Note: 12 Gauge Plate Straps are non-stock items and may require a 2 week lead-time.

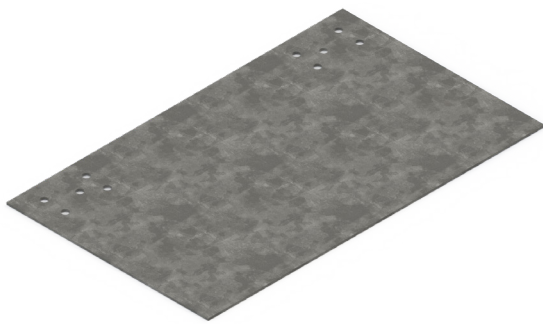


FHA NAIL PLATES

5" & 6" Galvanized FHA Plate

Used to reinforce floor or ceiling joists that have been cut for pipes passing through a stud.

DMC Part No	Dimensions	GA	QTY per CTN	CTN Weight	Skid QTY
PLS-5616	5" x 6"	16	25	13 lbs	175 CTNS
PLS-5816	5" x 8"	16	25	17 lbs	175 CTNS
PLS-5916	5" x 9"	16	25	19 lbs	N/A
PLS-51216	5" x 12"	16	25	26 lbs	105 CTNS
PLS-51616	5" x 16"	16	15	35 lbs	112 CTNS
PLS-51816	5" x 18"	16	15	37 lbs	60 CTNS
PLS-52416	5" x 24"	16	15	52 lbs	112 CTNS
PLS-6616	6" x 6"	16	25	16 lbs	105 CTNS
PLS-6916	6" x 9"	16	25	23 lbs	N/A
PLS-61216	6" x 12"	16	25	31 lbs	105 CTNS
PLS-61816	6" x 18"	16	25	28 lbs	100 CTNS
PLS-62416	6" x 24"	16	15	37 lbs	N/A

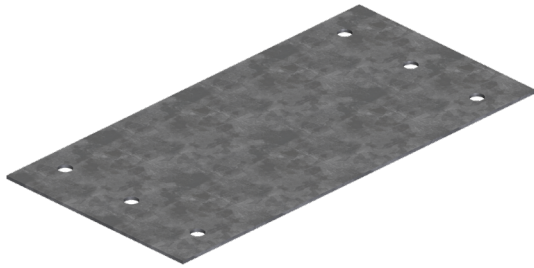


FHA NAIL PLATES

10" Galvanized FHA Plate

Used to reinforce floor or ceiling joists that have been cut for pipes passing through a stud.

DMC Part No	Dimensions	GA	QTY per CTN	CTN Weight	Skid QTY
PLS-100616	10" x 6"	16	25	26 lbs	80 CTNS
PLS-100916	10" x 9"	16	25	39 lbs	60 CTNS
PLS-101216	10" x 12"	16	25	52 lbs	40 CTNS
PLS-101816	10" x 18"	16	25	47 lbs	40 CTNS
PLS-102416	10" x 24"	16	15	62 lbs	40 CTNS



MENDING PLATES

Galvanized Mending Plate

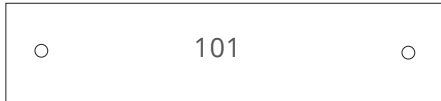
Used to provide protection for pipes and wiring from nails or screws.

DMC Part No	Dimensions	GA	QTY per CTN	CTN Weight
MP-2.517.518	2-1/2" X 17-1/2" - 4 Hole	18	50	31 lbs
MP-3918	3" x 9" - Multi Hole	18	50	24 lbs
MP-31818	3" x 18" - Multi Hole	18	25	20 lbs
MP-3.5618	3-1/2" x 6" - Multi Hole	18	25	10 lbs
MPS-3.5618	3-1/2" x 6" - Self Nailing	18	25	10 lbs
MP-3.51818	3-1/2" x 18" - 4 Hole	18	25	23 lbs
MP-5518	5" x 5" - Multi Hole	18	50	26 lbs
MP-5718	5" x 7" - Multi Hole	18	50	25 lbs
MP-5918	5" x 9" - Multi Hole	18	50	32 lbs
MP-2.517.516	2-1/2" X 17-1/2" - 4 Hole	16	50	37 lbs
MP-3916	3" x 9" - Multi Hole	16	50	31 lbs
MP-31816	3" x 18" - Multi Hole	16	25	23 lbs
MP-3.5616	3-1/2" x 6" - 4 Hole	16	25	10 lbs
MPS-3.5616	3-1/2" x 6" - Self Nailing	16	25	10 lbs
MP-3.51816	3-1/2" x 18" - 4 Hole	16	25	29 lbs
MP-5516	5" x 5" - Multi Hole	16	50	34 lbs
MP-5716	5" x 7" - Multi Hole	16	50	32 lbs
MP-5916	5" x 9" - Multi Hole	16	50	41 lbs
MP-6616	6" x 6" - Multi Hole	16	50	30 lbs
MP-6816	6" x 8" - Multi Hole	16	25	21 lbs

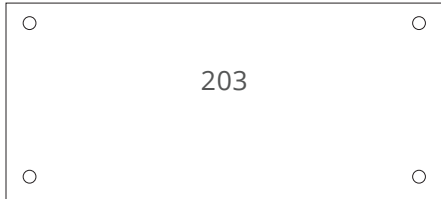
*Note: 18Gauge Plate Straps are non-stock items and may require a 2 week lead-time.

Hole Pattern Placement

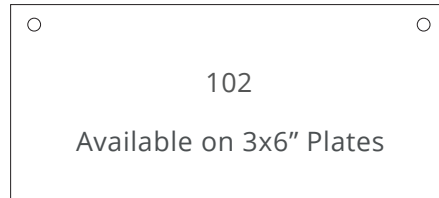
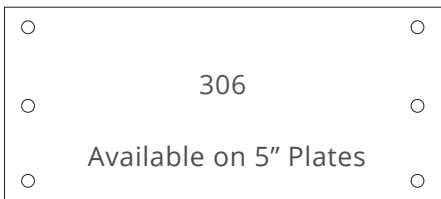
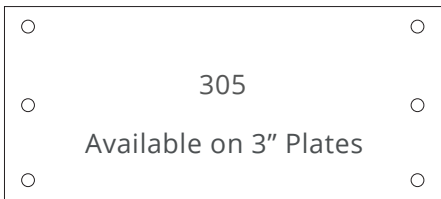
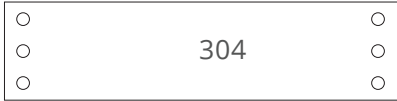
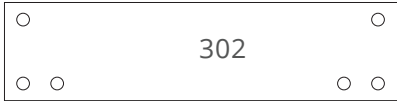
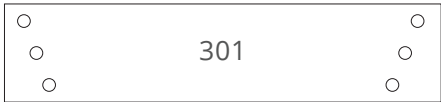
100 Hole Pattern Series - 1 hole on each end
Available on 1 1/2" Plates ONLY



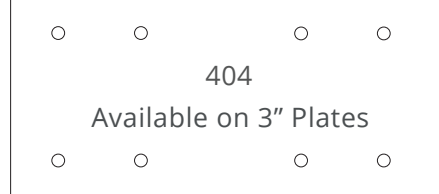
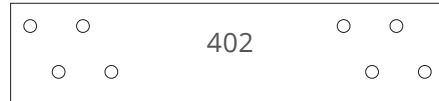
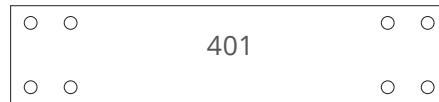
200 Hole Pattern Series - 4 Holes
Available on 3" and 5" Plates



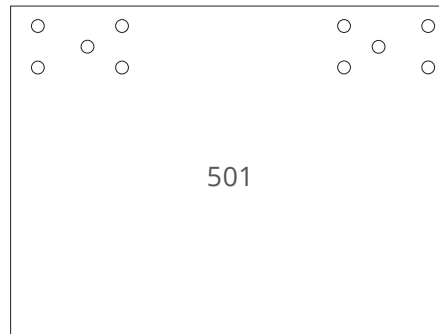
300 Hole Pattern Series - 6 Holes
Available on 1 1/2" and 3" Plates



400 Hole Pattern Series - 8 Holes
Available on 1 1/2" and 3" Plates

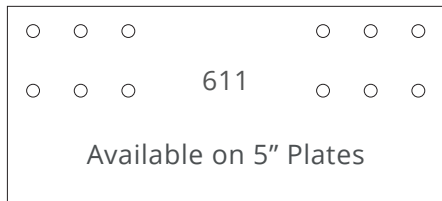
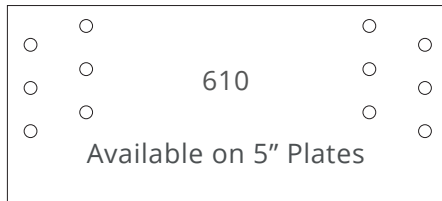
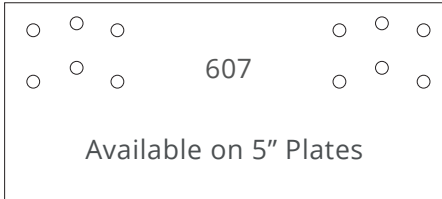
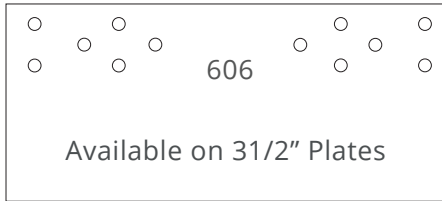
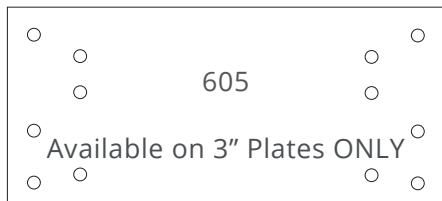
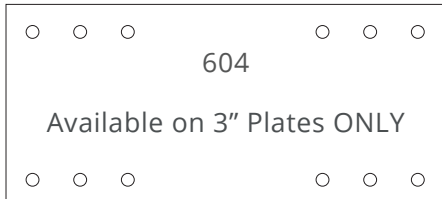
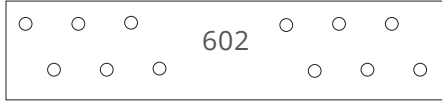


501 Hole Pattern - 5 holes on each end
Available on 10" Plates

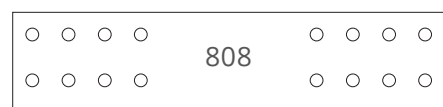
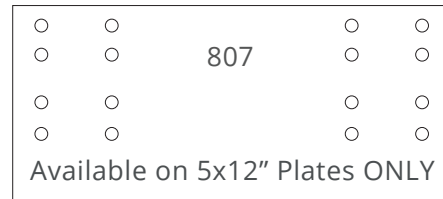
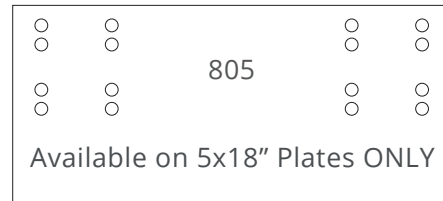
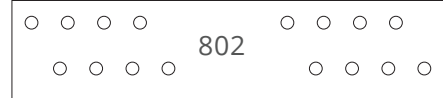
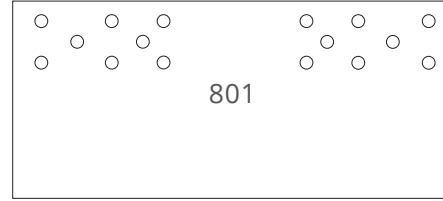


*Drawings are to show placement of specific hole patterns and are not to scale or dimension.
Please contact Customer Service for a detailed print.*

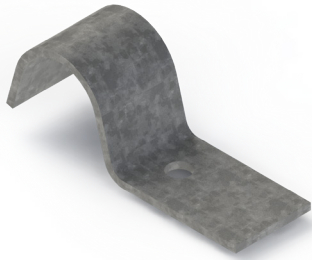
600 Hole Pattern Series -12 Holes
Available on 1 1/2" and 3" Plates



800 Hole Pattern Series -16 Holes
Available on 1 1/2", 3" and 3 1/2" Plates



Additional Hole Patterns available upon request and are subject to a Minimum Order Quantity and longer lead-times.



1 HOLE - HEAVY DUTY

Galvanized Pipe Straps

Used to secure and support galvanized piping

DMC Part No	Size	GA	CTN QTY	CTN Weight
1H-50PS	1/2"	14	100	4 lbs
1H-75PS	3/4"	14	100	10 lbs



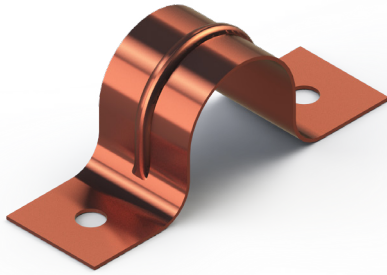
2 HOLE - STANDARD DUTY

Galvanized Pipe Straps

Used for securing pipe in light and heavy duty commercial applications. Secures piping around fitting to ensure against excessive vibration.

Size is in reference to pipe OD. Visit www.dundeemfg.com for pipe specifications.

DMC Part No	Size	GA	CTN QTY	CTN Weight
GA-38PS	3/8"	24	200	1 lb
GA-50PS	1/2"	24	100	2 lbs
GA-75PS	3/4"	24	100	1 lb
GA-100PS	1"	20	100	3 lbs
GA-125PS	1-1/4"	20	50	3 lbs
GA-150PS	1-1/2"	20	50	2 lbs
GA-200PS	2"	20	50	2 lbs
GA-250PS	2-1/2"	16	25	4 lbs
GA-300PS	3"	16	10	4 lbs
GA-400PS	4"	16	10	5 lbs

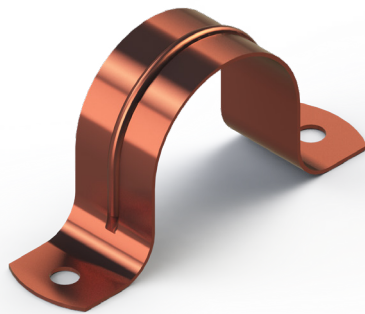


2 HOLE - STANDARD DUTY

Copper Coated Steel

Used to secure and support copper piping. Secures piping around fitting to ensure against excessive vibration.

DMC Part No	Size	GA	CTN QTY	CTN Weight
CC-38PS	3/8"	22	200	2 lbs
CC-50PS	1/2"	22	100	1 lb
CC-75PS	3/4"	22	100	1 lb
CC-100PS	1"	22	100	3 lbs
CC-125PS	1-1/4"	22	50	2 lbs
CC-150PS	1-1/2"	22	50	2 lbs
CC-200PS	2"	22	50	2 lbs

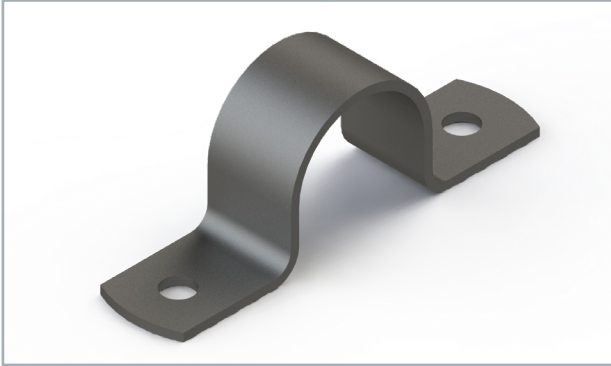


2 HOLE - STANDARD DUTY

Solid Copper Steel

Used to secure and support copper piping. Secures piping around fitting to ensure against excessive vibration.

DMC Part No	Size	GA	CTN QTY	CTN Weight
CP-38PS	3/8"	24	200	1 lb
CP-50PS	1/2"	24	100	1 lb
CP-75PS	3/4"	24	100	1 lb
CP-100PS	1"	24	100	2 lbs



HEAVY DUTY PIPE STRAPS

Plain Steel

Used to anchor piping securely to floor or framing member.

DMC Part No	Size	GA	CTN QTY	CTN Weight
HDPS-50	1/2"	10	10	6 lbs
HDPS-75	3/4"	10	10	6 lbs
HDPS-100	1"	10	10	7 lbs
HDPS-125	1-1/4"	10	10	7 lbs
HDPS-150	1-1/2"	10	10	6 lbs
HDPS-200	2"	10	10	7 lbs
HDPS-250	2-1/2"	3	5	9 lbs
HDPS-300	3"	3	5	10 lbs
HDPS-400	4"	3	5	15 lbs



HEAVY DUTY PIPE STRAPS

Zinc Plated

Secures piping around fitting to ensure against excessive vibration.

DMC Part No	Size	GA	CTN QTY	CTN Weight
HDPZ-50	1/2"	10	10	6 lbs
HDPZ-75	3/4"	10	10	6 lbs
HDPZ-100	1"	10	10	7 lbs
HDPZ-125	1-1/4"	10	10	7 lbs
HDPZ-150	1-1/2"	10	10	6 lbs
HDPZ-200	2"	10	10	7 lbs
HDPZ-250	2-1/2"	3	5	9 lbs
HDPZ-300	3"	3	5	10 lbs
HDPZ-400	4"	3	5	15 lbs

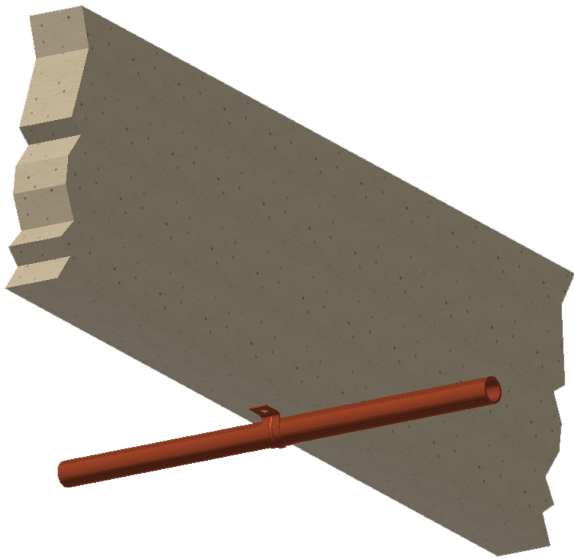


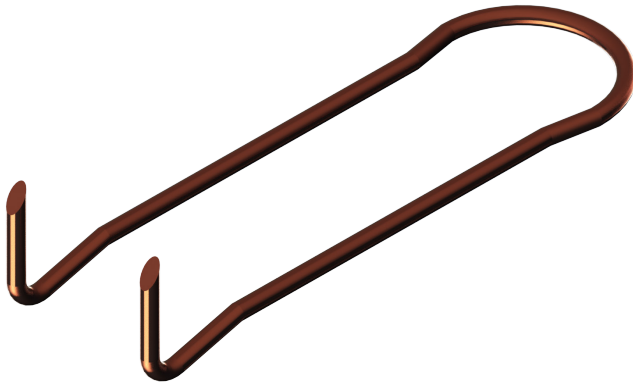
HEAVY DUTY PIPE STRAPS

Stainless Steel

Used to anchor piping securely to floor or framing member. Stainless straps add additional protection against corrosion.

DMC Part No	Size	GA	CTN QTY	CTN Weight
HDSS-50	1/2"	10	10	2 lbs
HDSS-75	3/4"	10	10	2 lbs
HDSS-100	1"	10	10	3 lbs
HDSS-125	1-1/4"	10	10	3 lbs
HDSS-150	1-1/2"	10	10	3 lbs
HDSS-200	2"	10	10	4 lbs
HDSS-250	2-1/2"	3	5	4 lbs
HDSS-300	3"	3	5	5 lbs
HDSS-400	4"	3	5	7 lbs





PIPE HOOKS

6" Pipe Hooks

Used to hang pipes from floor joist and eliminate vibration.

Also available in 4" and 8"

DMC Part No	Description	GA	QTY per CTN	CTN Weight
PHS-1/2-2-1/2-11	1/2" x 2-1/2" Plain Steel	11	100	2 lbs
PHS-3/4-2-1/2-11	3/4" x 2-1/2" Plain Steel	11	100	2 lbs
PHC-1/2-2-1/2-11	1/2" x 2-1/2" Copper Coated Steel	11	100	2 lbs
PHC-3/4-2-1/2-11	3/4" x 2-1/2" Copper Coated Steel	11	100	2 lbs

DMC Part No	Description	GA	QTY per CTN	CTN Weight
PHS-1/2-6-11	1/2" x 6" Plain Steel	11	50	2 lbs
PHS-3/4-6-11	3/4" x 6" Plain Steel	11	50	2 lbs
PHS-1-6-11	1" x 6" Plain Steel	11	50	2 lbs
PHS-1-1/4-6-11	1-1/4" x 6" Plain Steel	11	50	2 lbs
PHS-1-1/2-6-11	1-1/2" x 6" Plain Steel	11	50	2 lbs
PHS-1/2-6-9	1/2" x 6" Plain Steel	9	50	2 lbs
PHS-3/4-6-9	3/4" x 6" Plain Steel	9	50	2 lbs
PHS-1-6-9	1" x 6" Plain Steel	9	50	2 lbs
PHS-1-1/4-6-9	1-1/4" x 6" Plain Steel	9	50	2 lbs
PHS-1-1/2-6-9	1-1/2" x 6" Plain Steel	9	50	2 lbs

DMC Part No	Description	GA	QTY per CTN	CTN Weight
PHC-1/2-6-11	1/2" x 6" Copper Coated Steel	11	50	2 lbs
PHC-3/4-6-11	3/4" x 6" Copper Coated Steel	11	50	2 lbs
PHC-1-6-11	1" x 6" Copper Coated Steel	11	50	2 lbs
PHC-1-1/4-6-11	1-1/4" x 6" Copper Coated Steel	11	50	2 lbs
PHC-1-1/2-6-11	1-1/2" x 6" Copper Coated Steel	11	50	2 lbs
PHC-1/2-6-9	1/2" x 6" Copper Coated Steel	9	50	2 lbs
PHC-3/4-6-9	3/4" x 6" Copper Coated Steel	9	50	2 lbs
PHC-1-6-9	1" x 6" Copper Coated Steel	9	50	2 lbs
PHC-1-1/4-6-9	1-1/4" x 6" Copper Coated Steel	9	50	2 lbs
PHC-1-1/2-6-9	1-1/2" x 6" Copper Coated Steel	9	50	2 lbs

DMC Part No	Description	GA	QTY per CTN	CTN Weight
PHP-1/2-6-11	1/2" x 6" Plastic Coated Steel	11	50	2 lbs
PHP-3/4-6-11	3/4" x 6" Plastic Coated Steel	11	50	2 lbs
PHP-1-6-11	1" x 6" Plastic Coated Steel	11	50	2 lbs
PHP-1-1/4-6-11	1-1/4" x 6" Plastic Coated Steel	11	50	2 lbs
PHP-1-1/2-6-11	1-1/2" x 6" Plastic Coated Steel	11	50	2 lbs
PHP-1/2-6-9	1/2" x 6" Plastic Coated Steel	9	50	2 lbs
PHP-3/4-6-9	3/4" x 6" Plastic Coated Steel	9	50	2 lbs
PHP-1-6-9	1" x 6" Plastic Coated Steel	9	50	2 lbs
PHP-1-1/4-6-9	1-1/4" x 6" Plastic Coated Steel	9	50	2 lbs
PHP-1-1/2-6-9	1-1/2" x 6" Plastic Coated Steel	9	50	2 lbs

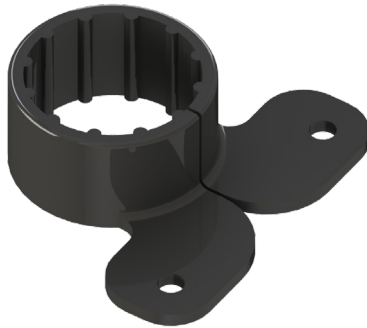


HALF CLAMP

Polyethylene

Constructed of high impact plastic and used to reduce vibration on piping.

DMC Part No	Description	QTY per CTN	CTN Weight
PL-38HC	3/8" with Pre-loaded Nail	100	1 lb
PL-50HC	1/2" with Pre-loaded Nail	100	1 lb
PL-75HC	3/4" with Pre-loaded Nail	50	1 lb
PL-100HC	1" with Pre-loaded Nail	50	2 lbs

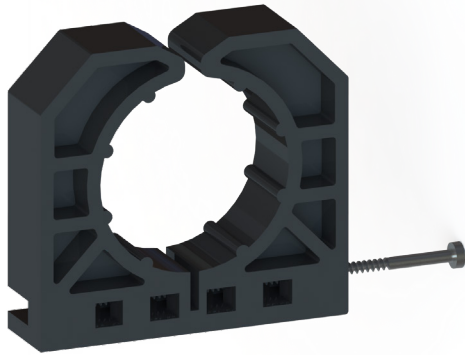


2 HOLE CLAMP

Polyethylene

Eliminates noise due to pipe expansion & contraction. Ideal for isolating CPVC tubing from wood.

DMC Part No	Description	QTY per CTN	CTN Weight
PL-50PC	1/2" Split Design Pipe Strap	100	1 lb
PL-75PC	3/4" Split Design Pipe Strap	50	1 lb
PL-100PC	1" Split Design Pipe Strap	50	1 lb
PL-125PC	1-1/4" Split Design Pipe Strap	25	1 lb
PL-150PC	1-1/2" Split Design Pipe Strap	25	1 lb
PL-200PC	2" Split Design Pipe Strap	25	2 lbs

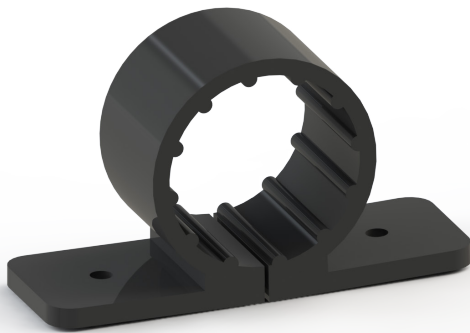


FULL CLAMP

Polyethylene

Fast and easy to use; allows tube contraction and expansion.

DMC Part No	Description	QTY per CTN	CTN Weight
PL-50FC	1/2" with Pre-loaded Nail	100	1 lb
PL-75FC	3/4" with Pre-loaded Nail	50	1 lb
PL-100FC	1" with Pre-loaded Nail	50	2 lbs

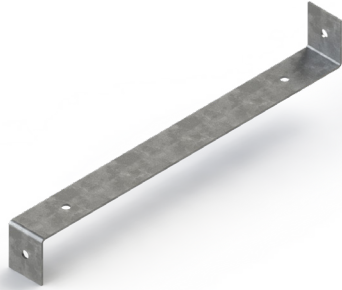


SUSPENSION CLAMP

Polyethylene

Design allows for hard-to-reach installation & eliminates contact between pipe and framing.

DMC Part No	Description	QTY per CTN	CTN Weight
PL-50SC	1/2" Split Design	100	1 lb
PL-75SC	3/4" Split Design	50	1 lb
PL-100SC	1" Split Design	50	1 lb
PL-125SC	1-1/4" Split Design	25	1 lb
PL-150SC	1-1/2" Split Design	25	1 lb
PL-200SC	2" Split Design	25	2 lbs

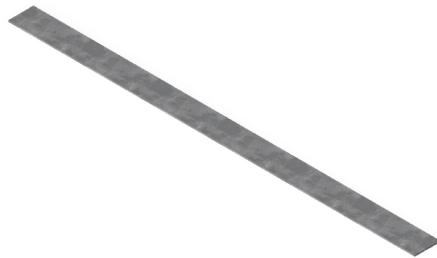


DUCT HANGER

Galvanized

Used to hang Hot Air Supply & Cold Air Returns to framing member.

DMC Part No	Dimensions	GA	QTY per CTN	CTN Weight
DH-08	7/8" x 8" Galvanized Duct Hanger	18	100	13 lbs
DH-09	7/8" x 9" Galvanized Duct Hanger	18	100	15 lbs
DH-10	7/8" x 10" Galvanized Duct Hanger	18	100	17 lbs

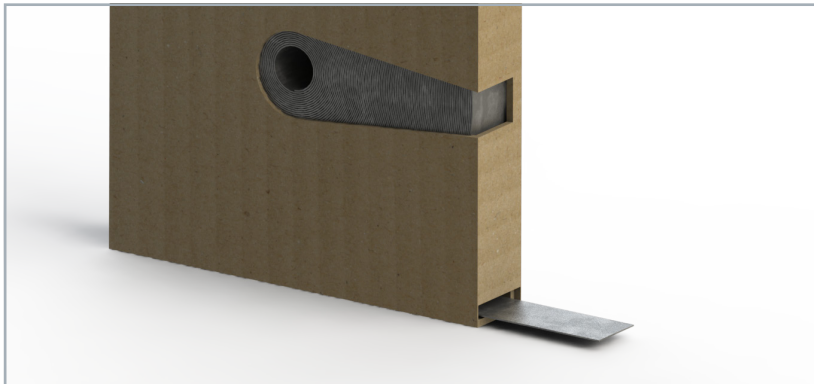


DUCT STRAP

10' Galvanized Duct Strap

Versatile product used for hanging or securing any type of ductwork, tubing or piping. Also available in 304 & 316 Stainless material.

DMC Part No	Dimensions	GA	QTY per CTN	CTN Weight
DS-301-10	1" x 10' Galvanized	30	10	8 lbs
DS-301.5-10	1-1/2" x 10' Galvanized	30	10	8 lbs
DS-261-10	1" x 10' Galvanized	26	10	7 lbs
DS-261.5-10	1-1/2" x 10' Galvanized	26	10	10 lbs
DS-241-10	1" x 10' Galvanized	24	10	11 lbs
DS-241.5-10	1-1/2" x 10' Galvanized	24	10	16 lbs
DS-221-10	1" x 10' Galvanized	22	10	12 lbs
DS-201-10	1" x 10' Galvanized	20	10	14 lbs
DS-201.5-10	1-1/2" x 10' Galvanized	20	10	21 lbs



DUCT STRAP

100' Galvanized Duct Strap

Versatile product used for hanging or securing any type of ductwork, tubing or piping.

Also available in 304 & 316 Stainless material.

DMC Part No	Dimensions	GA	QTY per CTN	CTN Weight	Skid QTY
DS-301	1" x 100' Individually Boxed Coils	30	10	8 lbs	60 CTNS
DS-301.5	1-1/2" x 100' Individually Boxed Coils	30	10	8 lbs	60 CTNS
DS-261	1" x 100' Individually Boxed Coils	26	10	7 lbs	60 CTNS
DS-261.5	1-1/2" x 100' Individually Boxed Coils	26	10	10 lbs	60 CTNS
DS-241	1" x 100' Individually Boxed Coils	24	10	11 lbs	60 CTNS
DS-241.5	1-1/2" x 100' Individually Boxed Coils	24	10	16 lbs	60 CTNS
DS-221	1" x 100' Individually Boxed Coils	22	10	12 lbs	40 CTNS
DS-201	1" x 100' Individually Boxed Coils	20	10	14 lbs	40 CTNS
DS-201.5	1-1/2" x 100' Individually Boxed Coils	20	10	21 lbs	40 CTNS



Dundee Manufacturing Company
107 Fairchild Drive
Dundee, Michigan 48131

W: www.dundeemfg.com
E: csr@dundeemfg.com
P: 734.529.2540
F: 734.529.3583

For customer orders and inquiries please contact
Customer Service/Inside Sales orders@dundeemfg.com

Terms and Conditions:

The following terms and conditions apply to all approved customers. Dundee Manufacturing Company will qualify or disqualify a customer based on certain due diligence. We reserve the right to change the Terms and Conditions at our sole discretion. If there is a change in the performance of the account, Dundee Manufacturing Company reserves the right to change the payment terms at its sole discretion at any time.

How to Order:

Call (734) 529-2540 and speak to a customer service representative to obtain pricing. Inquiries or purchase orders can be emailed to csr@dundeemfg.com or faxed to (734) 529-3583.

Credit Terms:

All approved credit terms will be Net 30 days. Discounts can be offered on an account-by-account basis. Please contact your local Sales Representative or visit our website at www.dundeemfg.com to download the Credit Application and email it to csr@dundeemfg.com or fax it to (734) 529-3583.

Past Due:

Any account that exceeds (60) days will be subject to a late fee of 1.5% per month finance charge. Dundee Manufacturing Company reserves the right to modify terms in the event of a default or original payment terms are not met.

Pricing:

Orders over \$15,000 NET can qualify for discounted pricing. Please contact customer service at csr@dundeemfg.com to receive a special quote. *All Prices are subject to change without notice.

Minimum Order Policy:

No order for merchandise will be rendered for less than a minimum charge of \$100 Net, excluding transportation charges.

Prepaid Freight Policy:

Dundee Manufacturing Company will pay full freight to a single destination within Zone 1 (Michigan, Ohio, Indiana, Illinois, West Virginia, Pennsylvania, Kentucky, and south of Green Bay, Wisconsin), on orders exceeding \$1250.00 NET. Dundee Manufacturing Company will pay full freight to a single destination with Zone 2 which includes all states East of the Mississippi River (excluding Zone 1), on orders exceeding \$1500.00 NET. Dundee Manufacturing Company will allow a 5% discount for customer pick-up on orders totalling at least \$1250.00 NET. *Contact Customer Service to determine the FFA in your area.

International Shipping:

Dundee Manufacturing Company does provide international shipping; however, all shipments will be FOB Dundee, Michigan. Customer is responsible for all freight and customs charges that may occur. All international orders will be subject to extended lead-time due to customs and transit time. Customer will need to provide any and all necessary custom forms for shipment to be delivered into the country.

Lead-Times and Order Changes:

All orders that are submitted after 11:00am will be processed on the following business day. Dundee Manufacturing Company strives to ship stock orders within 24-48 hours. Non-stock items and large stock orders will require additional lead-time, to be determined at time of order.

We reserve the right to increase orders to meet our standard carton quantity. We make every effort to abide by your instructions, however any changes made to a Purchase Order that has been confirmed could require additional lead-time and/or fees.

Weight Variance:

The weights are approximate due to the range of thickness on the steel. All Dundee Manufacturing Company weights are considered final.

Shipping Discrepancies and Defective Material:

Any damage to a shipment of product must be reported when receiving the shipment. Within 15 days from the time the shipment was received, the customer is required to give written notice to Dundee Manufacturing Company of any claim that the shipment is unacceptable. If the goods are defective, pictures are required with the written notice. Any material which proves to be defective will be replaced at no charge. Dundee Manufacturing Company is limited to actual replacement of product involved and accepts no responsibility for labor or kindred claims.

Dundee Manufacturing Company will not be responsible for any shipping errors after 15 business days from shipment receipt. Orders that ship Collect will be the sole responsibility of the customer. The customer must file any damage or shortage claim with the carrier. Dundee Manufacturing is not responsible for any damage or shortage due to third party carrier.

Return Policy:

Returned material will not be accepted without written permission and a Return Goods Authorization (RGA) number assigned by customer service. All claims must be sent to customer service at csr@dundeemfg.com. Returned material will not be accepted beyond 6 months. Products that are returned without an RGA number, damaged or in any other condition that it was shipped will be refused. Returned material MUST be shipped in the original, undamaged packaging. The RGA is valid for 30 days after issue date. Any material authorized for return will be subject to a 15% restocking fee. The customer will be responsible for all freight charges that may occur during the process of returning material. Dundee Manufacturing reserves the right to alter the Return Policy at any time.

Liability of Use:

Dundee Manufacturing Company is not liable for any damages or injury that may occur due to improper installation or use of the product. This includes, but is not limited to, the attempt to utilize the material under conditions that exceed the designed capabilities or intended use.

WARRANTY:

Dundee Manufacturing Company warrants product(s) to be without defect, in material or workmanship, for one year from date of shipment, provided all applicable Federal, State and Local laws, rules, regulations, building standards and codes are applied during installation. Dundee Manufacturing will replace any product(s) that appears to be defective in material and/or workmanship and is covered by the warranty.

Warrant will be effective:

(1) product was installed in accordance of supplied instruction or residential/commercial use practices that are approved by existing Federal, State and Local building laws, rules, regulations, building standards and codes. (2) product has not been misused or damaged through improper care and does not show signs of rust, corrosion, degradation or any other internal/external damage. (3) product has not been modified, altered or repaired by any 3rd Party company aside from Dundee Manufacturing Company. (4) product was approved during inspection after installation. (5) product was not altered or damaged by uncontrollable, outside influence or natural causes. Dundee Manufacturing is not responsible for any installation, removal of product or additional cost incurred for any maintenance, inspection or re-installment of product due to natural wear and tear and is not covered under warranty. Dundee Manufacturing reserves the right to modify or improve any product. THIS WARRANTY EXCLUDES ALL OTHER WARRANTIES EXPRESSED OR IMPLIED. DMC MAKES NO OTHER WARRANTY CLAIMS EXPRESSED OR IMPLIED OTHER THAN THE ABOVE EXPRESSED WARRANTY.

CONTACT INFO

107 Fairchild Drive, MI. USA

Phone: +1 734.529.2540

Fax: +1 734.529.3583

Email: csr@dundeemfg.com

Orders: orders@dundeemfg.com

www.dundeemfg.com